



# CP

## Snow plough



The CP is a single-bladed rotary flap snow plough ideal for winter maintenance in towns and cities, and surrounding roads. It can be mounted on implement carriers, tractors and trucks and is perfect for clearance of large amounts of snow. What differs the CP plough from other snow plough is the fully automatic, robust override system which provides compromise between aggressiveness and safety of the snow plough operations.

### Highlights

- Ideal for **large amounts of snow**
- **Stable and robust construction** with low weight
- **Hydraulic plough relief**
- Fully **automatic override system**

### Your benefits

- **Thorough snow removal:** The special blade shape and its large inclination guarantee a very clean snow removal.
- **Flexible use:** Can be used for both hard and soft snow removal.
- **Stability:** Robust construction with low weight.

We know how important it is that your machines and equipment are always ready to deploy. **Get in touch with us** about our range of tailored services and original spare parts.





Using digital solutions to monitor, control and optimise your operations? Saving fuel and resources? With reduced CO<sub>2</sub> emissions and increased security? **Get in touch with us.** We'll make it work.

## Performance features

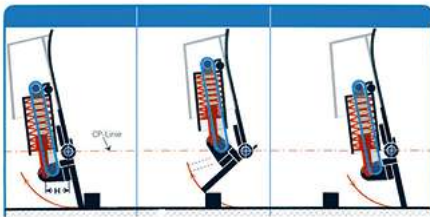
### Plough blade

The CP has a special blade shape with a high degree of inclination that guarantees a clean snow flow with short placement at low clearing speed, and wide snow distribution at high clearing speed. The torsion-resistant and stable box construction guarantees a very high stability at low weight. To minimise the amount of road salt, the CP delivers aggressive and very thorough clearing due to the 13° angle of attack of the cutting edge.



### Override security system

The CP is equipped with a fully automatic, robust override system for safe clearing operations without interruption. Rotary flaps with scraper strips, pre-tensioned by disc spring assemblies, give way to the rear when approaching obstacles and then spring back into the normal position, while the height of the plough remains constant and allows uninterrupted snow clearance.



### Cutting edges

#### Steel cutting edge (S)

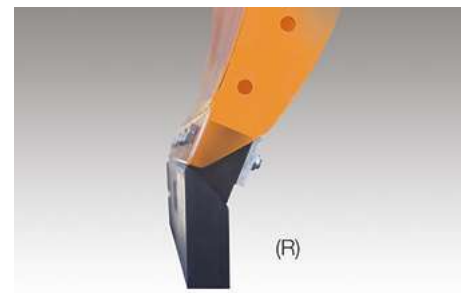
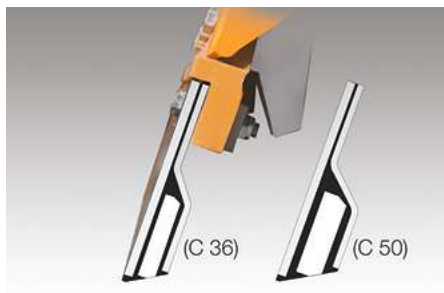
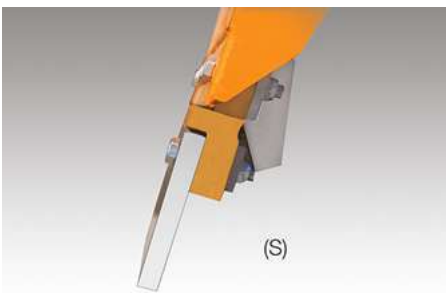
A multi-purpose, cost optimised solution for aggressive clearing of hard and/or compact snow. Steel cutting edges are resistant to bending and twisting, giving a clean result.

#### Combi cutting edge size 36 (C 36)

A more durable cutting edge made of steel, rubber and ceramic. This cutting edge is meant for aggressive snow clearing and can be a good alternative if the steel cutting edge is wearing out too fast. The combination of materials ensures noise and vibration reduction.

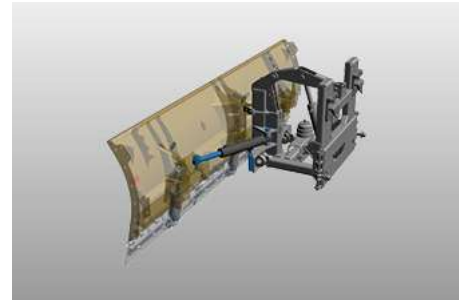
#### Rubber cutting edge (R)

A good solution for use on inner city roads and speciality properties like parking lots. Due to the flexible and elastic characteristics of rubber, it glides smoothly over the surface. A rubber cutting edge is especially efficient when clearing snow slush.



## Lifting device

A three-point lift, with automatic transverse tilt compensation, enables the plough to be raised and lowered accurately with precision. A swing device moves the plough automatically between working and transport positions. Turning and lifting cylinders are the same which enable easier maintenance of the plough.



## Hydraulic system

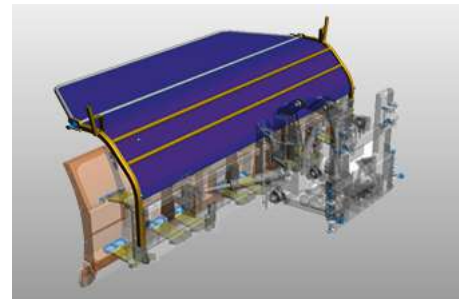
A pressure relief valve mounted on the lifting cylinder reduces the pressure on the ground and protects cylinder and snow plough from overload. A lowering brake valve slows the plough during lowering, but lifts it at full speed. The hydraulic lift and swivel cylinders are made of stainless steel piston rod for improved resistance, while the share stop is made from noise and vibration-reducing polyurethane for greater efficiency.

## Working support devices

The castor wheels ensure precise adjustment of the snow plough and provide appropriate aggressiveness during snow clearing. They support the frame when driving over obstacles and extend the service life of the cutting edge.

## Snow deflector

A snow deflector prevents poor visibility due to snow swirling up to the windscreen of the vehicle. The CP has an adjustable snow deflector made of cloth. This version is particularly suitable for powder snow and high speeds. Prevent the snow flow over the ploughshare direct on the windscreen.



## Mounting

For optimum positioning of the snow plough on different vehicle plates, the device plate is height-adjustable and can be attached to vehicle plates according to DIN Form A or B, plus plates with the national standards of Switzerland, Austria and France. Besides, it is also possible to adapt the 3-point hitch to tractors.

## Options

- Kerbstone deflector
- Impellers
- Parking trolley with wheels
- Adjustable snow dust protection

## Related products

### FLL

Snow plough



### MPC

Snow plough



### SNK

Snow plough





Trust in our many years of uniquely diverse experience. **Get in touch with us.** We'll find the right solution for your specific challenge.

## Technical data

|   | CP 2                               | CP 3                               |
|---|------------------------------------|------------------------------------|
| <b>Construction</b>                     |                                    |                                    |
| Number of spring loaded segments        | 3                                  | 3                                  |
| <b>Dimensions</b>                       |                                    |                                    |
| Plough height                           | 1,010 mm                           | 1,010 mm                           |
| Length at cutting edge                  | 2,700 mm                           | 3,000 mm                           |
| Clearing width                          | 2,290 mm at 32°<br>2,180 mm at 36° | 2,540 mm at 32°<br>2,430 mm at 36° |
| <b>Weights</b>                          |                                    |                                    |
| Approx. weight with steel cutting edges | 685 kg                             | 720 kg                             |



© Aebi Schmidt Group  
[www.aebi-schmidt.com](http://www.aebi-schmidt.com)

Aebi Schmidt Holding AG  
CH-8050 Zurich, Switzerland

All rights reserved. Technical data is  
subject to change.  
Illustrations are not binding. Errors and  
amendments excepted.

Document created on 15 FEB 2024

